

WELCOME TO

BRADFORD GIRLS' GRAMMAR SCHOOL

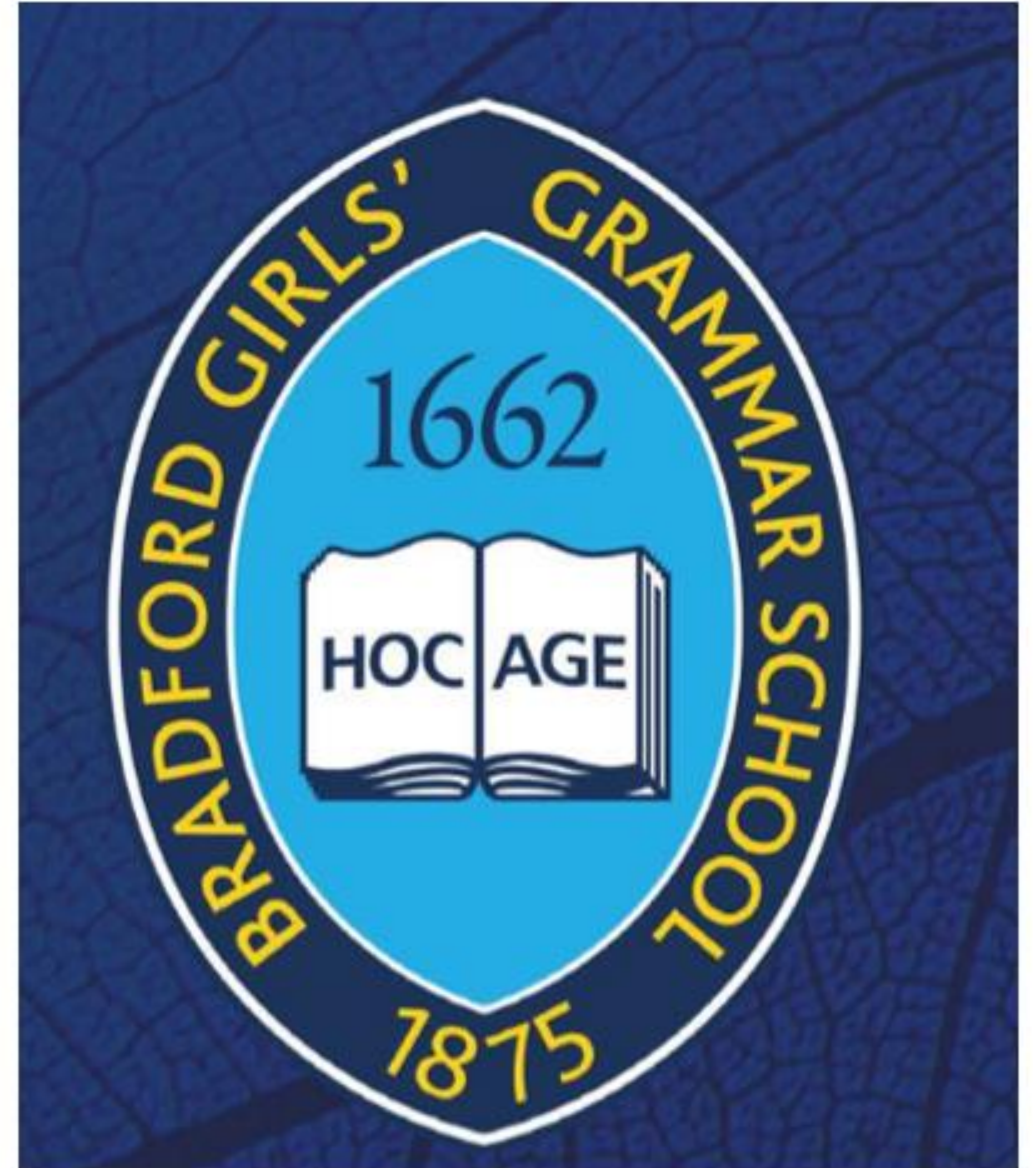
Witamy Vitajte Bienvenue Bienvenidas

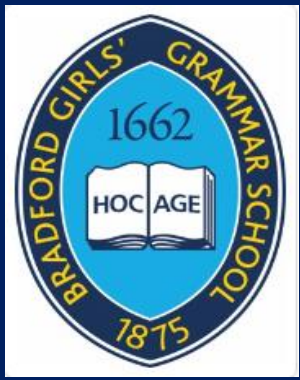
خوش آمدید أهلا بك 英语 सदागत है

ברוך הבא 1662 1875

bdat

Bradford Diocesan
Academies Trust





Welcome to BGGs

Parent Information Session

September 2023





Key Staff

- Mrs Proud Headteacher
- Mrs Howarth Deputy Headteacher
- Ms Jackson Assistant Headteacher (Behaviour & Culture)
- Mrs Sutcliffe Assistant Headteacher (Personal Development)
- Miss Harris Designated Safeguarding Lead
- Mr Mahmood SENDCo - kmahmood@bggs.com



Key Dates

October half term

- Students finish at 3.15pm on Thursday 19 October
- Friday 20 October is a BDAT Staff Training Day

End of term – Christmas break

- Students and Staff finish on Friday 15 December

Aspiration



- High aspiration and expectations for every child – academic and personal
- Educate our girls to become respectful, polite and knowledgeable young women who have the qualifications, skills and attributes to succeed and make informed choices
- Develop kind and considerate human beings who have a moral purpose and a social conscience, who value individual difference and celebrate diversity and make good choices based on knowing right from wrong
- Good citizens who are empowered to go forward with courage and confidence



Teaching and Learning.

- A broad and balanced curriculum, focused around the Ebacc at KS4.
- Subject specialists in every curriculum team.
- A three year Key Stage 3 – GCSE options chosen in Year 9.
- Curriculum information on the school website.
- Homework – set on class charts.
- Reporting three times per year: Attainment and Attitude to Learning. Attainment Attitude to Learning and a comment and a progress Meeting (face to face).

Key contacts: Subject Teacher, Subject/Curriculum Leader, Deputy Headteacher.

Personal Development



What does Personal Development involve?



- PSHE and RSE
- Citizenship
- Careers Education, Information and Guidance
- Extra-Curricular Activities
- School and British Values
- School Council and other leadership opportunities



We are all included at BGGGS

- ✓ At BGGGS we work hard in lessons
- ✓ At BGGGS we are always polite to everyone
- ✓ At BGGGS we treat everyone equally
- ✓ At BGGGS we are respectful
- ✓ At BGGGS we deal with issues correctly
- ✓ We are all proud to learn at BGGGS





At BGGGS we work hard and are proud to learn

- ✓ We arrive at lessons on time and ready to learn
- ✓ We have smart uniform and all our equipment everyday
- ✓ We put effort into thinking about new ideas and completing our work
- ✓ We listen to the teacher and other pupils
- ✓ We use lesson time to learn



At BGGGS we are polite and respectful

- ✓ We smile and greet pupils and staff, making and maintaining eye contact
- ✓ We say please and thank you
- ✓ We hold doors open for others
- ✓ We follow instructions made by staff first time every time
- ✓ We use full sentences and names when speaking to staff



At BGGGS we treat everyone equally

- ✓ We are kind to everyone
- ✓ We do not use language which might offend people
- ✓ We do not tolerate bullying – we are UPSTANDERS not bystanders
- ✓ We try to make things better by talking to people and saying sorry if we make a mistake
- ✓ We celebrate our differences



Rewards

- Pupils collect achievement points in all lessons and by demonstrating School Values at any time
- They can 'cash in' their points for rewards at the end of each term or save them for the end of the year
- Examples of rewards shown – may change based on pupil voice this half term
- Some rewards will be invitations where the trip needs to be paid for by the family

Rewards at BGGs

Platinum Reward: 800 points balance + 96% attendance
Invitation to the end of year trip to Alton Towers £

Gold Reward: 600 points balance + 96% attendance
Invitation to the end of year trip to Flamingo Land or Cadbury World £

Silver Rewards: 500 points balance
Invitation to: 2 hour inflatables session £

Bronze Rewards: 250 points
Invitation to: Circus skills workshop, ice skating, trampoline park, Insane Air, Headingley? Sleepover

Other Rewards: 100 points
Advertised termly and include:
Coffee morning, Movie afternoon, Pizza party, Sports Hall Disco, Circus Skills, Breakfast, Swimming, Cooking, Picnic

Y11 Reward: 250 points balance + 96% attendance
Invitation to Prom £



ASPIRE • SUCCEED • LEAD
BRADFORD GIRLS' GRAMMAR SCHOOL
Co-educational up to 11, Girls only 11-16



PSHE including RSE



PSHE Scheme and Resources



- We use Jigsaw, a PSHE curriculum that meets all statutory requirements
- It has 6 themes that are delivered in an age-appropriate way to every year group at the same time (Year R – Year 11)
- Being Me In My World
- Celebrating Difference (*Year 11 – Dreams and Goals)



Creating Faith-Sensitive RSE



- The religious backgrounds of our pupils are taken into account when planning teaching, so that the content is faith-sensitive.
- Since our formal consultation in Summer Term 2021 we have:
 - ✓ Met with stakeholders to discuss concerns (parents, Bradford Council, Council of Mosques)
 - ✓ Met with a small focus group of parents to review all resources
 - ✓ Reviewed different schemes: 'You, Me, PSHE' and the Association of Muslim Schools' scheme
 - ✓ Reviewed guidance, such as one produced by Kirklees and national guidance
 - ✓ Visited other schools to share good practice
 - ✓ Provided staff training
- Further information can be found on our website



Behaviour



The standards that all staff members are invested in challenging.

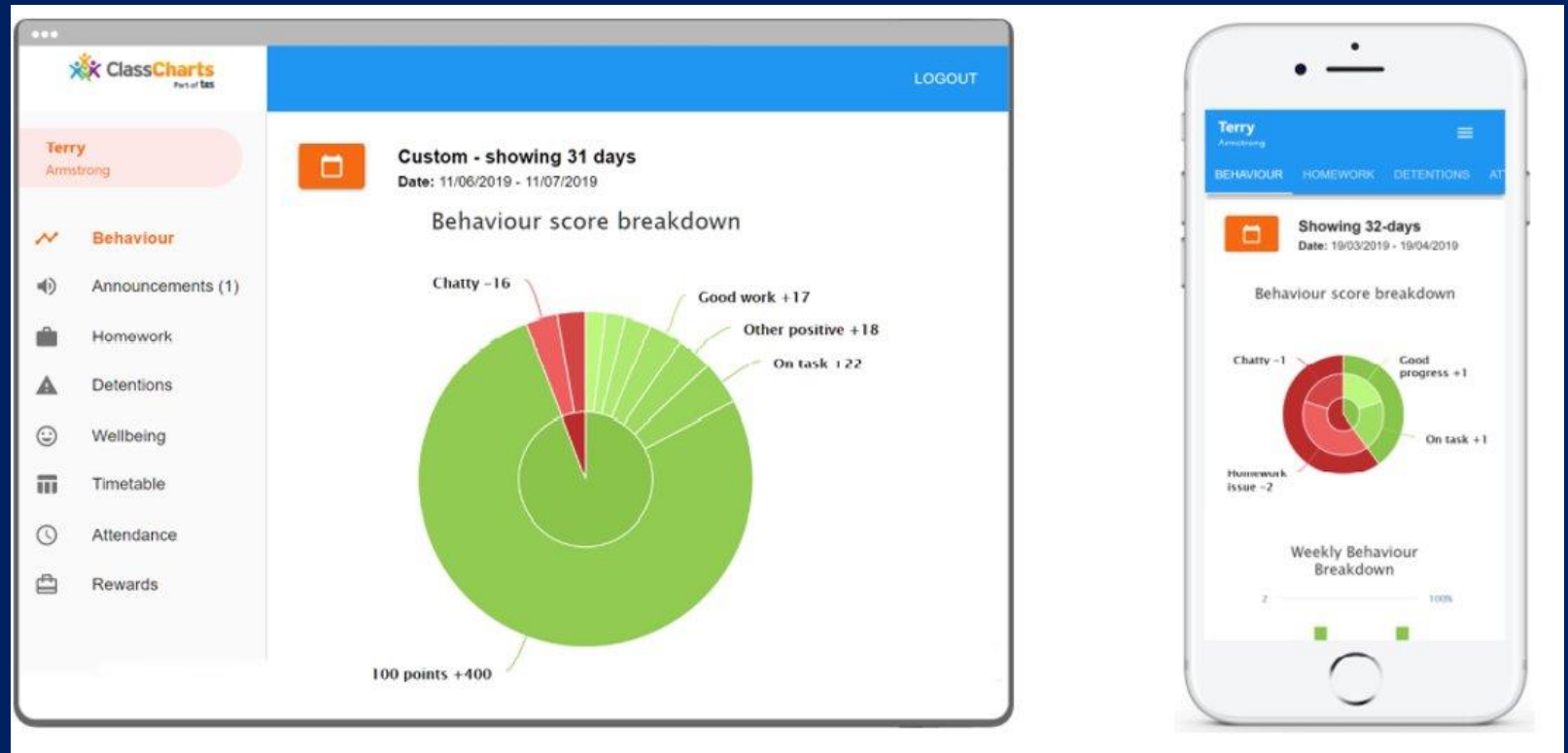
Accountability	Self-confidence	Perseverance	Integrity	Respect	Empathy
Be punctual to lessons Do not use mobile phone during the school day Follow the school one-way system	No coats on inside One pair of studs per ear No nose rings No rings, necklaces or bracelets	Do not cause any disruption in the corridors	Do not eat indoors except for the Dining room No energy drinks No chewing gum Do not drop litter or graffiti	Do what any member of staff asks, first time, every time No foul or abusive language to be used	Do not be unkind to any member of the school community

Behaviour



- Class Charts allows you to keep track of your
- Achievements
- Behaviour
- Homework
- Detentions

View your timetable



Class Charts for students can be accessed via a website, or by our iOS and Android apps.

Safeguarding

Working in partnership with you, to care for your child's wellbeing...



The Safeguarding Team

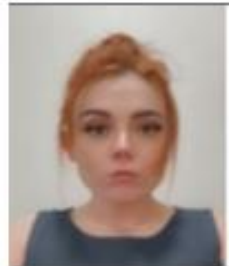
If you have concerns about the welfare of one of our pupils, please speak to any member of our safeguarding team.



Miss Harris



Mr Mahmood



Miss Pemberton



Mrs Howarth



Mrs Proud



C Day Governor for SG

Support includes, but not limited to -

- Early Help – Family Support
- Filtering and Monitoring
- Referral to Children & Adult Counselling / Wellbeing Sessions
- Pastoral Check ins
- Support from Childrens Social Care

Good Attendance is an important part of safeguarding and achieving outstanding results

Tier 1 100%	Pupils in Tier 1 do not miss any days of school per year, and they access all learning opportunities available to them. They have the strongest chance of fulfilling their potential. At our school, students in this attendance tier typically achieve an average grade of 7.11, with an average progress score of 2.26.
Tier 2 97-99%	Pupils in Tier 2 miss up to 7 days of school per year which is up to 35 hours of learning. They access the majority of learning opportunities available to them and have a strong chance of fulfilling their potential. At our school, students in this attendance tier typically achieve an average grade of 5.24, with an average progress score of 0.62.
Tier 3 95%-97%	Pupils in Tier 3 miss up to 10 days of school per year which is around 50 hours of learning. They are at risk of underachievement as a result. At our school, students in this attendance tier typically achieve an average grade of 5.09, with an average progress score of 0.17.
Tier 4 90%-95%	Pupils in Tier 4 miss up to 19 days of school per year. This is approximately 95 hours of learning. They are deemed to be pupils who are at risk of persistent absenteeism and are at high risk of underachievement. At our school, students in this attendance tier typically achieve an average grade of 5.18, with an average progress score of 0.47.
Tier 5 88%-90%	Pupils in Tier 5 miss up to 23 days of school per year. This is approximately 110 hours of learning. They are classed as Persistently Absent pupils by the government and are at severe risk of underachievement. At our school, students in this attendance tier typically achieve an average grade of 6.30, with an average progress score of 0.13.
Tier 6 50%-88%	Pupils in Tier 6 miss between 23 and 95 days of school per year. This is between one and three entire half-terms or 115-475 hours of learning. They are classed as Persistently Absent pupils by the government and are at extreme risk of underachievement. At our school, students in this attendance tier typically achieve an average grade of 4.63, with an average progress score of -0.06.
Tier 7 Below 50%	Pupils in Tier 7 miss over 95 days of school per year. This is over 475 hours of learning. They are deemed to be Severely Absent pupils by the government and are at critical risk of underachievement. At our school, students in this attendance tier typically achieve an average grade of 2.40, with an average progress score of -1.51.



Further Information

- Year 7 – G2
- Year 8 & 9 – G3
- Year 10 & 11 – G4
- SEND – G5
- PSHE – G6

Refreshments in the Atrium

